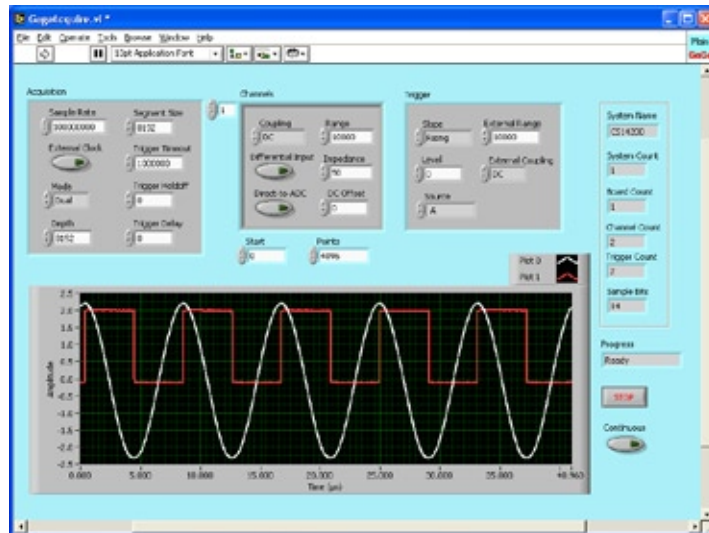


Gage's powerful and easy-to-use SDKs allow rapid integration of Gage hardware into a customer's software application under C/C#, MATLAB, LabVIEW, and other programming environments.

The CompuScope LabVIEW SDK for Windows allows Gage users complete control of CompuScope hardware while taking full advantage of the powerful, flexible, and easy-to-use graphical development environment of LabVIEW.

## CompuScope LabVIEW SDK for Windows Supports PCI and cPCI/PXI CompuScope Cards



Gage's CompuScope LabVIEW SDK allows complete control of Gage CompuScope hardware from a LabVIEW application running under Windows. The SDK provides several powerful Main VIs illustrating the use of CompuScope hardware in different operating modes. These Main VIs serve as a starting point for an optimized LabVIEW application using Gage CompuScope hardware. All Main VIs are constructed from powerful CsTool VIs that are easy-to-use building blocks, which can be used to implement any CompuScope functionality.







### FEATURES

- Full featured Main VIs for all CompuScope operating modes and combinations of CompuScope hardware
- Full control of configuration settings on all Main VIs
- Easy-to-use CsTool sub-VI layer with on-line help for all Main VIs
- Access to low-level DLL call VIs, which allow advanced LabVIEW users to achieve maximum hardware performance
- Driver re-entrancy, which allows simultaneous operation of CompuScope hardware from different Main VIs
- Easy querying for feedback on all current CompuScope hardware settings
- Full support for advanced timing features such as on-board time-stamping, external clocking, and 10 MHz reference synchronization
- Transparent support for Master/Slave Multi-Card CompuScope systems
- Extra Advanced Main VIs for support of on-board CompuScope processing FPGA firmware options

## COMPUSCOPE LABVIEW SDK MAIN VIS

GageSimple.vi	Verifies CompuScope driver and LabVIEW SDK operation
GageAcquire.vi	Provides control of the CompuScope system in simple acquisition mode
GageCoerce.vi	Similar to GageAcquire.vi, except that invalid settings are forced to available values
GageMultipleRecord.vi	Provides control of the CompuScope system in Multiple Record mode
GageDeepAcquisition.vi	Acquires and manages large data acquisitions from Deep Memory CompuScope Hardware (> 16 MB)
GageComplexTrigger Acquire.vi	Provides support for complex triggering using multiple on-board CompuScope trigger engines
GageTwoIndependent SystemsAcquire.vi	Operates two independent CompuScope systems with their own setting controls and display charts
GageDigitalCapture.vi	Acquires data from digital input CompuScope cards such as the CompuScope 3200

## COMPUSCOPE LABVIEW SDK CSTOOL VIS

	Contact VIs	Establishes contact with the CompuScope hardware
	Get VIs	Obtains capability information about the CompuScope hardware
	Configuration VIs	Adjusts configuration settings
	Queries VIs	Obtains the current CompuScope hardware setting information
	Action VIs	Performs CompuScope actions
	Error handler VI	Provides descriptive error messages

900 N. State St.  
Lockport, IL 60441-2200

**Toll-Free (US and Canada):**  
phone 1-800-567-4243  
fax 1-800-780-8411

**Direct:**  
phone +1-514-633-7447  
fax +1-514-633-0770

**Email:**  
prodinfo@gage-applied.com

To find your local sales representative or distributor or to learn more about GaGe's products visit:

**www.gage-applied.com**

### ORDERING INFORMATION

#### Hardware & Upgrades

CompuScope SDK for LabVIEW for Windows 200-200-103

Ask about our SDK Pack for C/C#, MATLAB, and LabVIEW, for CompuScope cards.